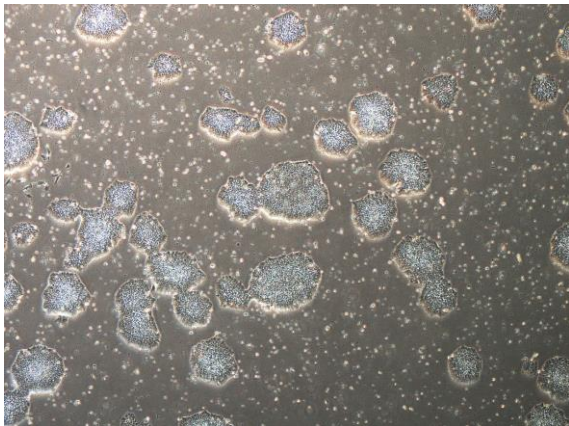
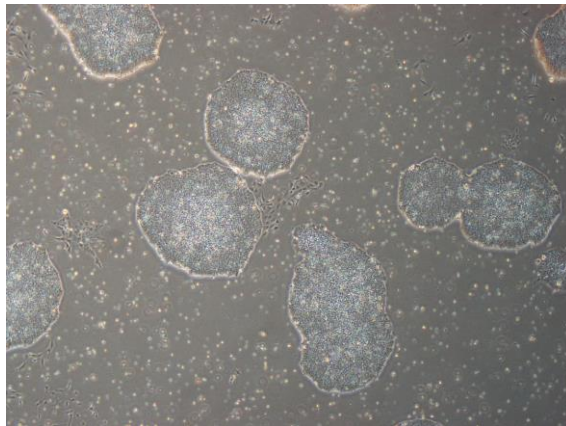


【 CiRA-j-1617 】 Morphology of iPSC colonies

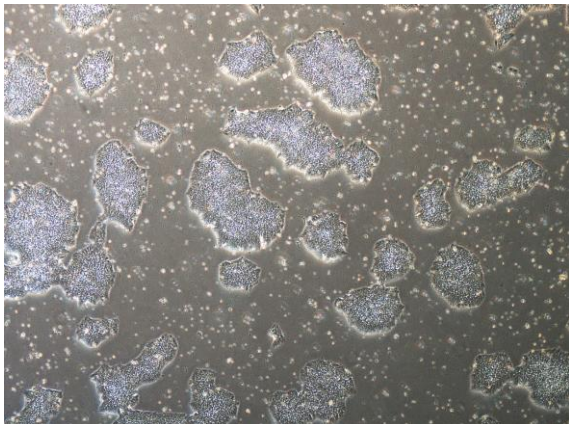
CiRA-j-1617-A: passage-3



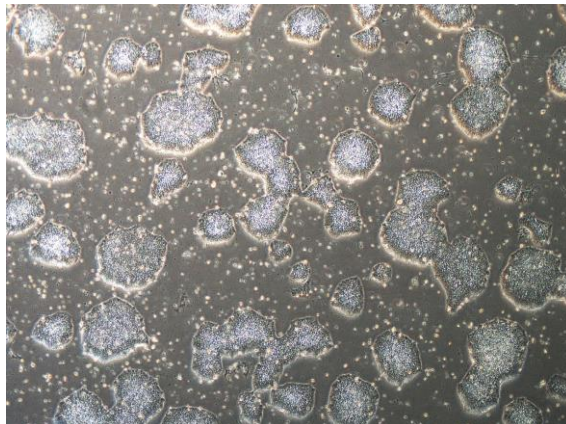
CiRA-j-1617-B: passage-3



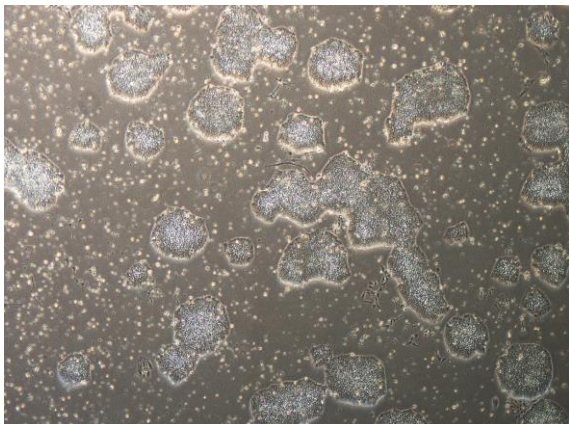
CiRA-j-1617-C: passage-3



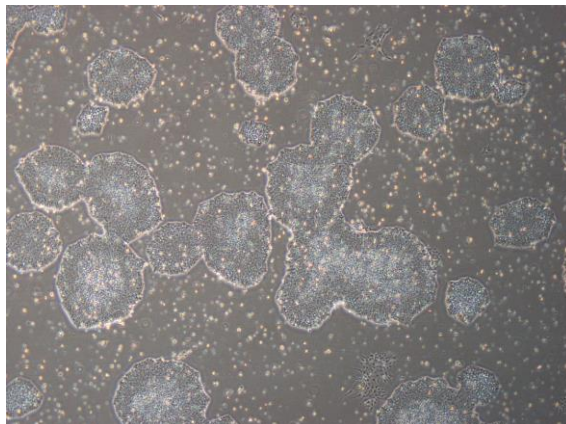
CiRA-j-1617-D: passage-3



CiRA-j-1617-E: passage-3



CiRA-j-1617-F: passage-3



(All images were captured at 4x magnification)